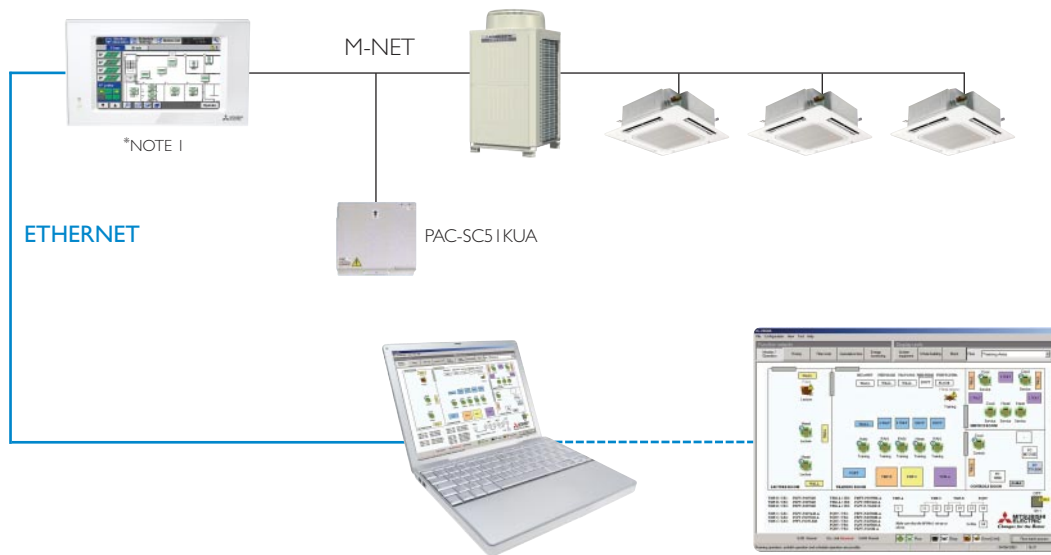


TG2000 Software

PC Based Software Package

The TG2000 centralised PC based graphical software package allows the operator to control and monitor up to a maximum of 2000 indoor units. This software has been designed to connect directly to an air conditioning system via the AG150/GB50 controller; allowing the operator the required functionality to control and monitor the complete air conditioning system from a central location.



Technical Information

TG2000 PC Based software that works in conjunction with AG150/GB50 Controller

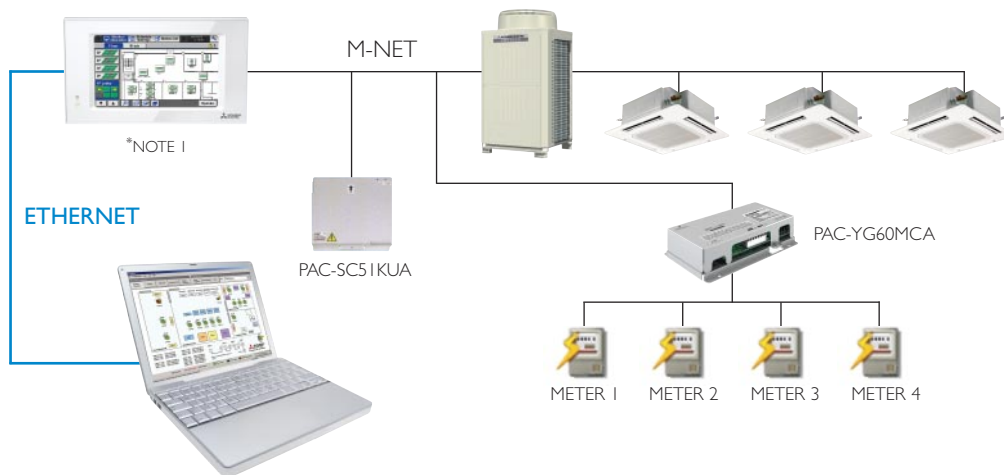
FUNCTION	DESCRIPTION
OPERATING PLATFORM	Pentium III, CPU 1000 Mhz, 256 MB RAM, 6GB or more. Internal LAN 10/100 MBps running Windows Professional 2000 service pack 4 or Windows Professional XP service pack 2 or Windows Vista
MAX No. OF INDOOR UNITS	2000 Indoor units, 50 indoor units per AG150/GB50
OPERATIONAL SECTIONS	The software package is split into two distinctive areas, System and Controls setting. System Setting: Password protected, System Configuration and group/block organisation, printer setting. Controls Setting: Normal Operation, monitoring and control functions as described below. The software allows individual indoor units to be allocated to logical groups, represented within user definable graphics screens, allocated during the system configuration
ON/OFF	Indicates the On/Off status of each group within the selected graphical screen or entire building
OPERATION MODE	Indicates the operational mode (Cool, Heat, Fan, Dry, Auto) for each group on the selected graphical screen
SET TEMPERATURE	Displays the set temperature for each group on the selected graphical screen. Also able to limit the set point range in both heating and cooling mode
AIR SPEED	Displays the current fan speed setting for each group on the selected graphical screen
REMOTE CONTROLLER PROHIBIT/PERMIT	Displays the current prohibit/permit status for each groups remote controller on the selected graphical screen
ABNORMALITY (FAULT) MONITORING	Individual indoor unit fault monitoring is recorded within the fault log for both viewing and printing. Fault monitoring can also be viewed via the fault log for all units associated with a particular graphical screen or the entire building. Faults can also be tracked and printed using date of failure, date of recovery and error code
ROOM TEMPERATURE MONITORING	Displays the return air temperature of the master indoor unit within a group
SCHEDULED ON/OFF	On/Off schedules can be set for each group, each graphical screen or the entire building
ENERGY SAVE CONTROL	Individual indoor unit, group of indoor units or a complete system can be controlled. There are various energy saving options available (Optional)
TREND LOGGING	Able to log: Return air temperature, setpoint, mode, On/Off, power consumption by group or by indoor unit, watt-hour meter and then email to customer
GRAPHICAL SCREENS	The complete system configurations can be allocated between multiple screens. Each screen can display a bitmap image representing the area of the building or floor where the units or groups are physically located
EMAIL	The following information may be sent regularly and automatically via email: energy monitoring data, energy saving data, trend logging data (temperatures etc) and fault code history

*NOTE 1: Applicable with AG150 / PAC-SC51KUA or GB50 / PAC-SC50KUA

TG2000 Software with Energy Monitoring

PC Based Software Package

The TG2000 centralised PC based graphical software package allows the operator to control and monitor up to a maximum of 2000 indoor units. This software has been designed to connect directly to an air conditioning system via AG150/GB50 controller, allowing the operator all the required functionality to control and monitor the complete air conditioning system from a central location. In addition to providing a centralised control facility, the TG2000 allows complete energy consumption data to be logged with user definable billing groups and electrical tariffs for billing purposes.



Technical Information

TG2000 Software with Energy Monitoring

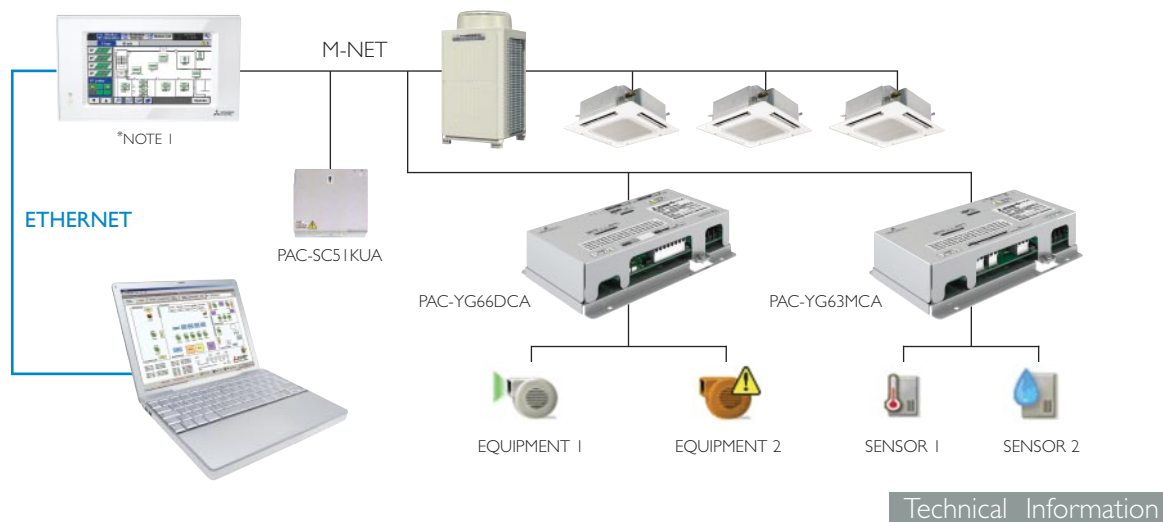
FUNCTION	DESCRIPTION
OPERATING PLATFORM	Pentium III, CPU 1000 Mhz, 256 MB RAM, 6GB or more. Internal LAN 10/100 MBps running Windows Professional 2000 service pack 4 or Windows Professional XP service pack 2 or Windows Vista
MAX No. OF INDOOR UNITS	2000 Indoor units, 50 indoor units per AG150/GB50
OPERATIONAL SECTIONS	The software package is split into two distinctive areas, System and Controls setting. System Setting: Password protected, System Configuration and group/block organisation, printer setting. Controls Setting: Normal Operation, monitoring and control functions as described below. The software allows individual indoor units to be allocated to logical groups, represented within user definable graphics screens, allocated during the system configuration
ON/OFF	Indicates the On/Off status of each group within the selected graphical screen or entire building
OPERATION MODE	Indicates the operational mode (Cool, Heat, Fan, Dry, Auto) for each group on the selected graphical screen
SET TEMPERATURE	Displays the set temperature for each group on the selected graphical screen. Also able to limit the set point range in both heating and cooling mode
AIR SPEED	Displays the current fan speed setting for each group on the selected graphical screen
REMOTE CONTROLLER PROHIBIT/PERMIT	Displays the current prohibit/permit status for each groups remote controller on the selected graphical screen
ABNORMALITY (FAULT) MONITORING	Individual indoor unit fault monitoring is recorded within the fault log for both viewing and printing. Fault monitoring can also be viewed via the fault log for all units associated with a particular graphical screen or the entire building. Faults can also be tracked and printed using date of failure, date of recovery and error code
ROOM TEMPERATURE MONITORING	Displays the return air temperature of the master indoor unit within a group
SCHEDULED ON/OFF	On/Off schedules can be set for each group, each graphical screen or the entire building
ENERGY CHARGING	Able to create or email bills for individual indoor units, groups of indoor units or a complete system (Optional) via the PAC-YG60MCA
WEB REFRIGERANT STATUS CHECK	Activate refrigerant volume checking function on Modular City Multi systems
ENERGY CHARGING	Able to create bills for individual indoor units, groups of indoor units or a complete system (Optional) via the PAC-YG60MCA
ENERGY SAVE CONTROL	Individual indoor unit, group of indoor units or a complete system can be controlled. There are various energy saving options available (Optional)
LOAD SHEDDING	Activate energy saving mode when energy consumption is too high
TREND LOGGING	Able to log: Return air temperature, setpoint, mode, On/Off, power consumption by group or by indoor unit, watt-hour meter and then email to customer
GRAPHICAL SCREENS	The complete system configurations can be allocated between multiple screens. Each screen can display a bitmap image representing the area of the building or floor where the units or groups are physically located
EMAIL	The following information may be sent regularly and automatically via email: energy monitoring data, energy saving data, trend logging data (temperatures etc) and fault code history

*NOTE 1: Applicable with AG150 / PAC-SC51KUA or GB50 / PAC-SC50KUA
 NOTE 2: Energy Meters not supplied by MEUK

TG2000 Software with Third Party Equipment

PC Based Software Package

The TG2000 centralised PC based graphical software package allows the operator to control and monitor up to a maximum of 2000 indoor units. This software has been designed to connect directly to an air conditioning system via AG150/GB50 controller; allowing the operator all the required functionality to control and monitor the complete air conditioning system from a central location. In addition to providing a centralised control facility, the TG2000 allows you to monitor and control third party equipment.



Technical Information

TG2000 Software with Third Party Equipment

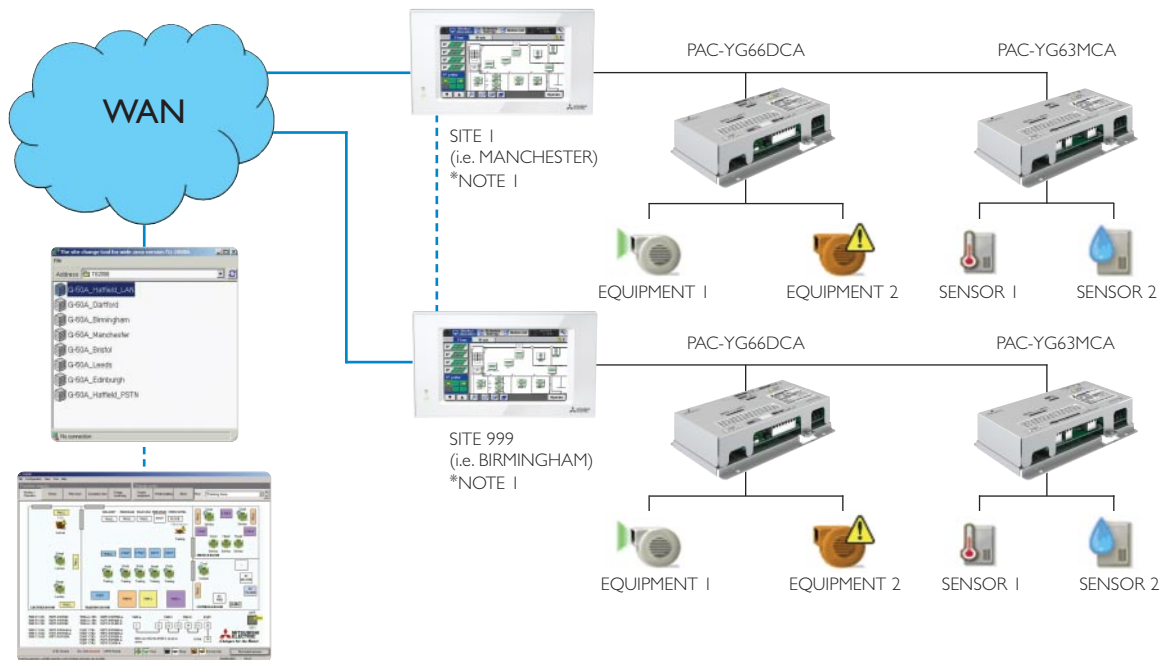
FUNCTION	DESCRIPTION
OPERATING PLATFORM	Pentium III, CPU 1000 Mhz, 256 MB RAM, 6GB or more. Internal LAN 10/100 MBps running Windows Professional 2000 service pack 4or Windows Professional XP service pack 2 or Windows Vista
MAX No. OF INDOOR UNITS	2000 Indoor units, 50 indoor units per AG150/GB50
OPERATIONAL SECTIONS	The software package is split into two distinctive areas, System and Controls setting. System Setting: Password protected, System Configuration and group/block organisation, printer setting. Controls Setting: Normal Operation, monitoring and control functions as described below. The software allows individual indoor units to be allocated to logical groups, represented within user definable graphics screens, allocated during the system configuration
ON/OFF	Indicates the On/Off status of each group within the selected graphical screen or entire building
OPERATION MODE	Indicates the operational mode (Cool, Heat, Fan, Dry, Auto) for each group on the selected graphical screen
SET TEMPERATURE	Displays the set temperature for each group on the selected graphical screen. Also able to limit the set point range in both heating and cooling mode
AIR SPEED	Displays the current fan speed setting for each group on the selected graphical screen
REMOTE CONTROLLER PROHIBIT/PERMIT	Displays the current prohibit/permit status for each groups remote controller on the selected graphical screen
ABNORMALITY (FAULT) MONITORING	Individual indoor unit fault monitoring is recorded within the fault log for both viewing and printing. Fault monitoring can also be viewed via the fault log for all units associated with a particular graphical screen or the entire building. Faults can also be tracked and printed using date of failure, date of recovery and error code
ROOM TEMPERATURE MONITORING	Displays the return air temperature of the master indoor unit within a group
SCHEDULED ON/OFF	On/Off schedules can be set for each group, each graphical screen or the entire building
ENERGY SAVE CONTROL	Individual indoor unit, group of indoor units or a complete system can be controlled. There are various energy saving options available (Optional)
TREND LOGGING	Able to log: Return air temperature, setpoint, mode, On/Off, power consumption by group or by indoor unit, watt-hour meter and then email to customer
GRAPHICAL SCREENS	The complete system configurations can be allocated between multiple screens. Each screen can display a bitmap image representing the area of the building or floor where the units or groups are physically located
THIRD PARTY EQUIPMENT MONITOR	Monitor general equipment Run and Faults via the PAC-YG66DCA interface and Temperature and Humidity via the PAC-YG63MCA
THIRD PARTY EQUIPMENT CONTROL	Control general equipment On/Off via the PAC-YG66DCA
EMAIL	The following information may be sent regularly and automatically via email: energy monitoring data, energy saving data, trend logging data (temperatures etc) and fault code history

*NOTE 1: Applicable with AG150 / PAC-SC51KUA or GB50 / PAC-SC50KUA
 NOTE 2: Temperature and Humidity Sensors not supplied by MEUK

TG2000 WAN (Wide Area Network) Software

PC Based Software Package used to monitor and control multiple sites

The TG2000 WAN centralised PC based graphical software package allows the operator to control and monitor up to a maximum of 1000 sites. Utilising the companies Wide Area Network, the complete (geographically distributed) air conditioning asset base can be controlled and monitored from a centralised location.



Technical Information

TG2000WAN (Wide Area Network) Software

FUNCTION	DESCRIPTION
OPERATING PLATFORM	Pentium III, CPU 1000 Mhz, 256 MB RAM, 6GB or more. Internal LAN 10/100 MBps running Windows Professional 2000 service pack 4 or Windows Professional XP service pack 2 or Windows Vista
MAX No. OF SITES	1000
MAX No. OF INDOOR UNITS PER SITE	2000 Indoor units, 50 indoor units per AG150/GB50 (per site)
OPERATIONAL SECTIONS	The software package is split into two distinctive areas, System and Controls setting. System Setting: Password protected, System Configuration and group/block organisation, printer setting. Controls Setting: Normal Operation, monitoring and control functions as described below. The software allows individual indoor units to be allocated to logical groups, represented within user definable graphics screens, allocated during the system configuration
ON/OFF	Indicates the On/Off status of each group within the selected graphical screen or entire building
OPERATION MODE	Indicates the operational mode (Cool, Heat, Fan, Dry, Auto) for each group on the selected graphical screen
SET TEMPERATURE	Displays the set temperature for each group on the selected graphical screen. Also able to limit the set point range in both heating and cooling mode
AIR SPEED	Displays the current fan speed setting for each group on the selected graphical screen
REMOTE CONTROLLER PROHIBIT/PERMIT	Displays the current prohibit/permit status for each groups remote controller on the selected graphical screen
ABNORMALITY (FAULT) MONITORING	Individual indoor unit fault monitoring is recorded within the fault log for both viewing and printing. Fault monitoring can also be viewed via the fault log for all units associated with a particular graphical screen or the entire building. Faults can also be tracked and printed using date of failure, date of recovery and error code
ROOM TEMPERATURE MONITORING	Displays the return air temperature of the master indoor unit within a group
SCHEDULED ON/OFF	On/Off schedules can be set for each group, each graphical screen or the entire building
GRAPHICAL SCREENS	The complete system configurations can be allocated between multiple screens. Each screen can display a bitmap image representing the area of the building or floor where the units or groups are physically located
THIRD PARTY EQUIPMENT MONITORING	Monitor general equipment Run and Faults via the PAC-YG66DCA interface and Temperature and Humidity via the PAC-YG63MCA
THIRD PARTY EQUIPMENT CONTROL	Control general equipment On/Off via the PAC-YG66DCA
EMAIL	The following information may be sent regularly and automatically via email: energy monitoring data, energy saving data, trend logging data (temperatures etc) and fault code history

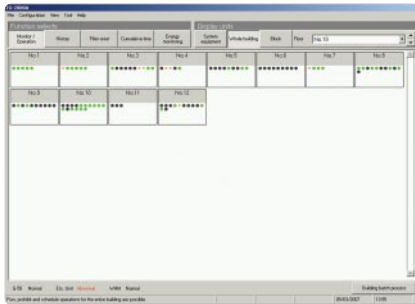
*NOTE 1: Applicable with AG150 / PAC-SC51KUA or GB50 / PAC-SC50KUA

NOTE 2: The TG2000 WAN cannot be utilised if the following site functions are required: energy charging, energy saving and trend logging.

NOTE 3: Temperature and Humidity Sensors not supplied by MEUK

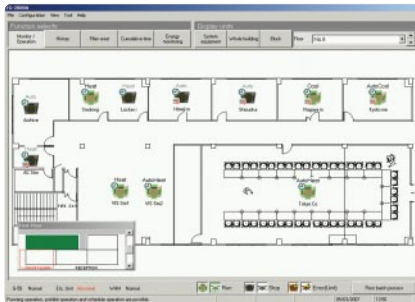
TG2000 Screenshots

Display Whole



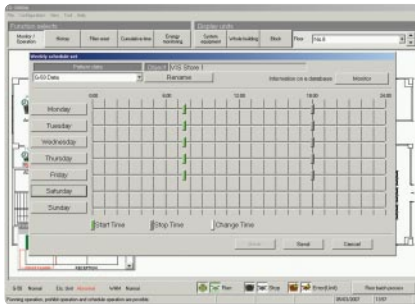
The 2000 indoor units status may be shown on one screen.

Display Floor



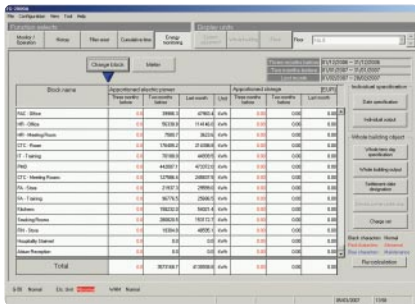
AutoCAD drawing may be imported to TG2000 to display floor screens.

Daily, Weekly and Annual Scheduling



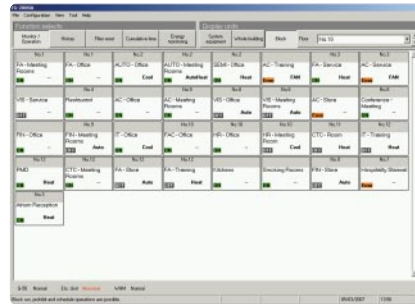
Scheduling may be set from the TG2000. A night set back operation is available (HEAT, 12°C).

Energy Monitoring (AG150 Energy PIN code)



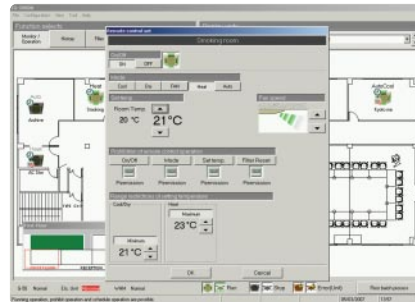
TG2000 in conjunction with energy meters can monitor the energy consumption for each outdoor unit, indoor unit or area. The indoor unit run hours can also be displayed.

Display Block



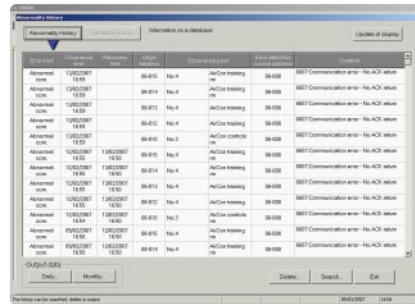
Block may be set for each area. Settings may be changed by one click of the mouse for each area.

Remote Controller Settings



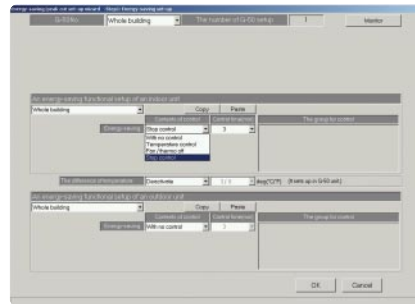
Click on any icons in the floor view to access the remote controller settings. Buttons on the local controllers may be locked (On/Off, Mode, Setpoint, Filter reset).

Monitor Fault Codes



Faults with the unit address can be displayed under fault conditions.

Energy Saving (AG150 Energy PIN code)



TG2000 offers different energy saving options including load shedding.

New icons now available to suit model type installed

