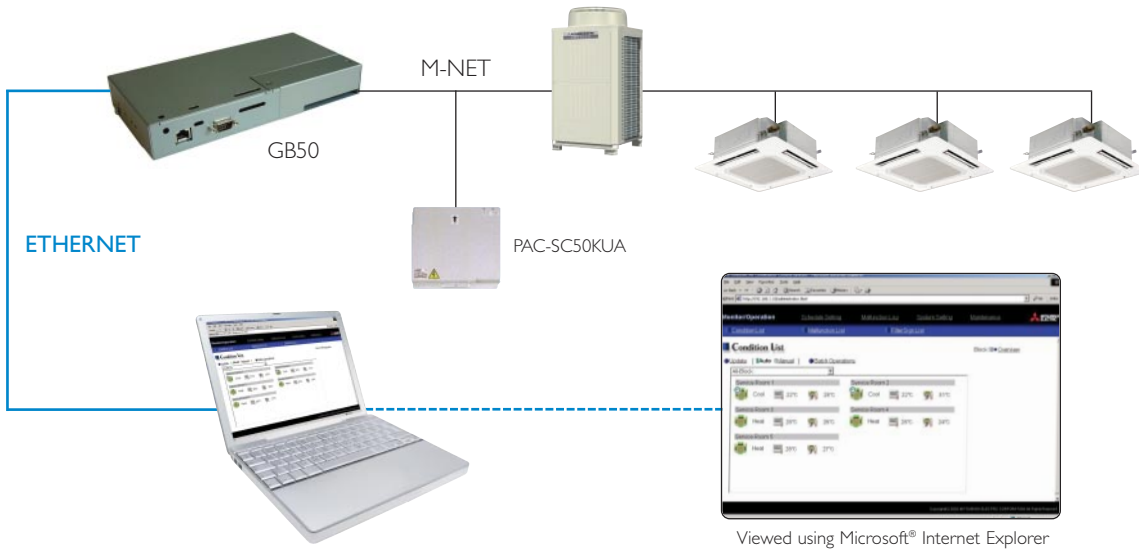


GB50 Controller

Centralised Controller with WebServer Capabilities

The GB50 has been developed to access all your control functions from the comfort of your own PC, without the need for a controller keypad or LCD display and at a very competitive price.



Technical Information

GB50 Controller	
FUNCTION	DESCRIPTION
OPERATION PLATFORM	Pentium III, CPU 1000 Mhz, 256 MB RAM, 6GB or more. Internal LAN 10/100 MBps running Windows Professional 2000 service pack 4 or Windows Professional XP service pack 2 or Windows Vista
MAX No. OF INDOOR UNITS	Up to 50 indoor units can be connected
ON/OFF	Run and Stop operation for a single group
MODE SELECTION	Switches between Cool/Dry/Auto/Fan/Heat. Operation Mode will vary depending on the indoor unit. Auto mode is available with only R2 and WR2 systems
TEMPERATURE SETTING	Sets the groups temperature control. Cool/Dry: 19-30°C, Heat: 17-28°C, Auto: 19-28°C
FAN SPEED SETTING	4 speed: Lo-Mi1-Mi2-Hi, 2 speed: Lo-Hi
AIR FLOW DIRECTION	Air Flow angles: 100°-80°-60°-40° and auto swing
TIMER OPERATION	Annual or weekly. Night set back option available allowing the setpoint to be set down to 12°C
PERMIT/PROHIBIT FUNCTION	Individual prohibit operations for each remote controller function (Run/Stop, Temperature Setting, Mode Selection and Filter Reset) can be activated
INDOOR RETURN AIR TEMPERATURE	Displays the measured intake temperature from each group
ERROR INDICATION	Displays a 4 digit code and the affected unit address. An error log is held showing the last 64 date stamped alarms
TEST RUN FUNCTION	Allows each unit within the group to operate in test mode
VENTILATION INTERLOCK	Allows the group to be interlocked with a heat recovery Lossnay unit
WEB SETPOINT LIMIT	Reduce the setpoint band of each individual unit (e.g. 23°C to 25°C)
WEB AUTO CHANGEOVER	Automatically switch heat pump outdoor unit to cooling or heating mode depending on the requirements
WEB INITIAL SETTING	Commission the GB50 from the web pages
WEB LOGIN	Administrator able to allow specific function access to guest
EXTERNAL INPUT/OUTPUT	Hardwired connections are available for : Inputs: Level Signal-Batch Start/Stop, Batch Emergency Stop Outputs: Start/Stop Status, Error/Normal Status
POWER SUPPLY	Power supply 240VAC 0.2A (PAC-SC50KUA recommended)
COMPATIBILITY	City Multi or Mr Slim via PAC-SF81MA or M Series via MAC-399IF
DIMENSIONS - mm (WxDxH)	250x38x130

GB50 Software Options - Pin Code Activation	
G50 - EC	Energy Charge
G50 - ES	Energy Saving Capability
G50 - PC	Peak Cut Control
G50 - VR	Virtual Remote Controllers

AG150/GB50 Controller Web Screenshots

Login



Access to the web pages is secured using a customised username and password.

Monitor Air Conditioning - Overview



The first screen allows you to monitor all the units connected to the AG150/GB50. Each icon displays On/Off, Faults and timer On/Off.

Monitor Air Conditioning - Block view



Each area of the building can be displayed with information about On/Off, Setpoint, Mode and Temperature.

Remote Controller Settings



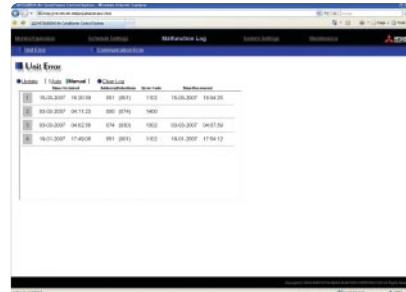
Click on any icons in the Monitor View page to access the remote controller. Lossnay units can also be controlled. Buttons on the local controllers may be locked (On/Off, Mode, Setpoint, Filter Reset).

Daily, Weekly and Annual Scheduling (AS PIN code)



Scheduling may be set from the web pages. A night set back operation is available (Heat, 12°C). Standard on the AG150/GB50.

Monitor Fault Codes



Faults with the unit address can be displayed under fault conditions. Email status can also be shown.

Multiple Users (VRC PIN code)



If the AG150/GB50 is connected to an office LAN, the staff will then be able to access the web pages. With VRC each member of staff will have their own username and password.

Multiple Users (VRC PIN code)



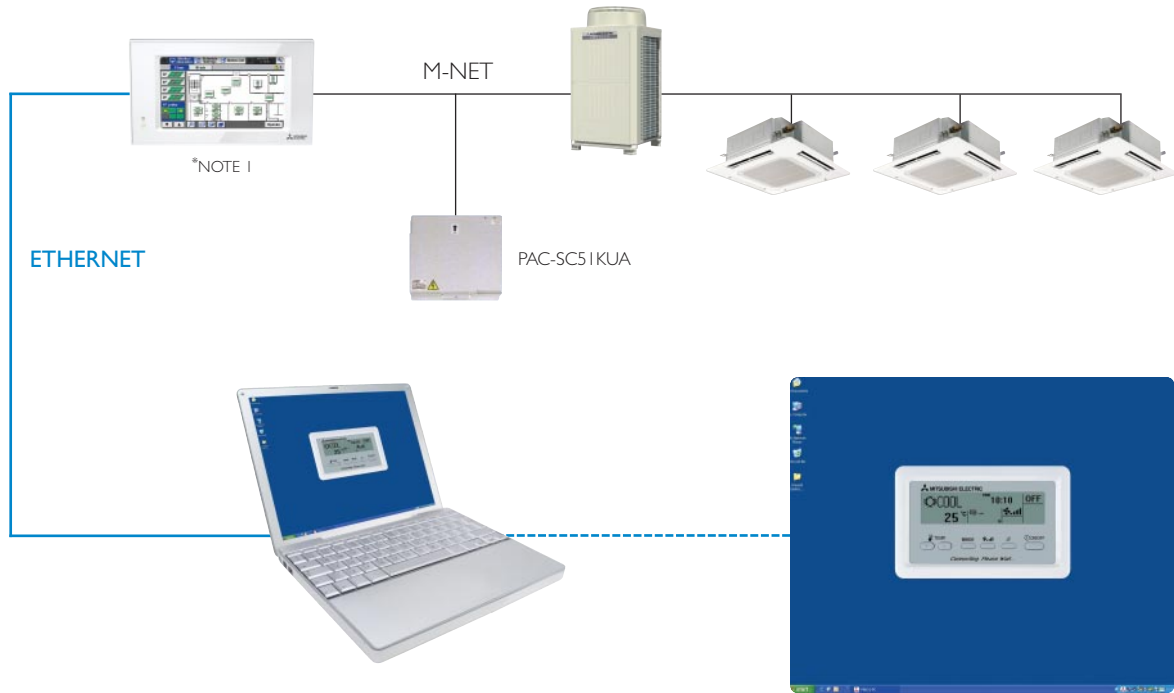
Installation costs will be reduced as no wall remote controllers will need to be purchased and installed.

New icons now available to suit model type installed.



AG150/GB50 Desktop Remote Controller

More and more customers are using the AG150/GB50 controllers directly from their computers, so Mitsubishi Electric has launched a new, even simpler alternative which presents the customer with what looks like a standard remote controller interface - on their PC desktop. Called the PAR-2IPC, the new application can also be minimised in the Desktop Toolbar, just like other Windows applications, so that the customer can have immediate control with just one click of the mouse.



Technical Information

PAR-2IPC Desktop Remote Controller

FUNCTION	DESCRIPTION
OPERATION PLATFORM	Pentium III, CPU 1000 Mhz, 256 MB RAM, 6GB or more. Internal LAN 10/100 MBps running Windows Professional 2000 service pack 4 or Windows Professional XP service pack 2 or Windows Vista
MAX No. OF INDOOR UNITS	Up to 16 indoor units within a group
ON/OFF	Run and Stop operation for a single group
MODE SELECTION	Switches between Cool/Dry/Auto/Fan/Heat. Operation Mode will vary depending on the indoor unit. Auto mode is available with only R2 and WR2 systems
TEMPERATURE SETTING	Sets the groups temperature control. Cool/Dry: 19-30°C, Heat: 17-28°C, Auto: 19-28°C
FAN SPEED SETTING	4 speed: Lo-Mi1-Mi2-Hi, 2 speed: Lo-Hi
AIR FLOW DIRECTION	Air Flow angles: 100°-80°-60°-40° and auto swing
CLOCK DISPLAY	Displays the time on the desktop controller
INDOOR RETURN AIR TEMPERATURE	Displays the measured intake temperature from each group
ERROR INDICATION	Displays a 4 digit code and the affected unit address.
TIMER OPERATION	Weekly. Maximum of 3 time sequences with 3 Start/Stop times per day for all groups can be allocated

*NOTE 1: Applicable with AG150 / PAC-SC51KUA or GB50 / PAC-SC50KUA