

SEZ-KD-VA Inverter Heat Pump

Ceiling Concealed Ducted System

Designed for homes, offices, restaurants or shops, the SEZ-KD-VA series operates at low noise levels. Its new improved low unit height and lightweight design also help to make installation easier and more convenient.



Note: Optional interfaces for M-NET connectivity (MAC-399IF) and group control, fault/run (MAC-397IF) are available. Please see accessories / optional extras section.

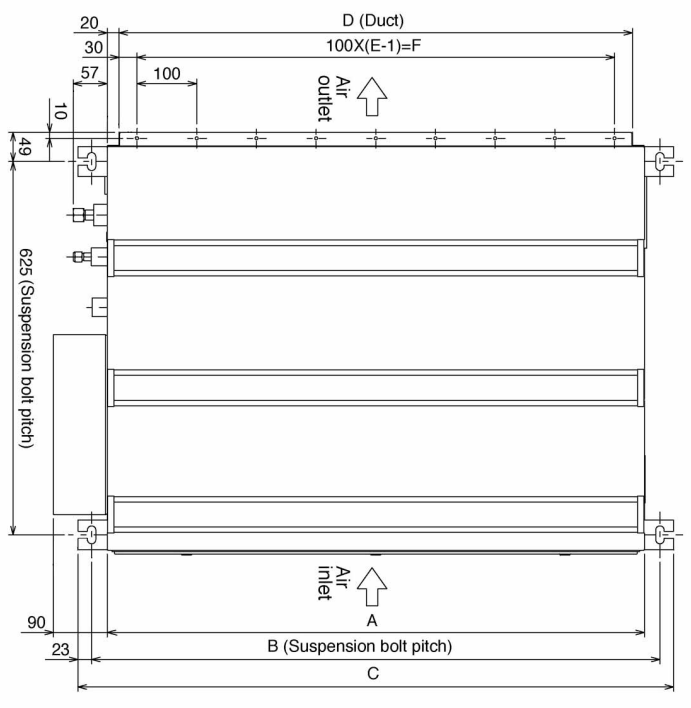
Technical Information

SEZ-KD-VA - INDOOR UNITS						
MODEL REFERENCE		SEZ-KD25VA	SEZ-KD35VA	SEZ-KD50VA	SEZ-KD60VA	SEZ-KD71VA
CAPACITY (kW)	Heating (nominal)	3.0 (0.9-4.5)	4.0 (0.9-5.0)	6.0 (1.1-7.2)	7.0 (0.9-8.0)	8.1 (0.9-10.4)
	Cooling (nominal)	2.5 (0.9-3.2)	3.5 (1.0-3.9)	5.0 (1.1-5.6)	5.5 (1.1-6.3)	7.1 (0.9-8.3)
	Heating (UK)	2.5 (0.75-3.75)	3.3 (0.75-4.15)	5.0 (0.9-6.0)	5.8 (0.75-6.65)	6.75 (0.75-8.65)
	Cooling (UK)	2.5 (0.9-3.15)	3.45 (1.0-3.85)	4.95 (1.1-5.55)	5.45 (1.1-6.25)	7.05 (0.9-8.25)
SHF (nominal)		0.80	0.78	0.76	0.79	0.74
COP / EER (nominal)		3.61 / 3.21	3.61 / 3.21	3.21 / 2.81	3.41 / 2.91	3.42 / 2.81
ENERGY LABEL	Heating/Cooling	A / A	A / A	C / C	B / C	B / C
AIRFLOW (m ³ /min)	Lo-Mi-Hi	5.5-7.0-9.0	7-9-11	10-12.5-15	12-15-18	12-16-20
EXTERNAL STATIC PRESSURE (Pa)	Lo-Mi1-Mi2-Hi	5-15-35-50	5-15-35-50	5-15-35-50	5-15-35-50	5-15-35-50
PIPE SIZE mm(in)	Gas	9.52 (3/8")	9.52 (3/8")	12.7 (1/2")	15.88 (5/8")	15.88 (5/8")
	Liquid	6.35 (1/4")	6.35 (1/4")	6.35 (1/4")	6.35 (1/4")	9.52 (3/8")
NOISE (dBA) (15Pa)	Lo-Mi-Hi	23-26-30	23-28-33	30-34-37	30-34-38	30-35-40
DIMENSIONS (mm)	Width	790	990	990	1190	1190
	Depth	700	700	700	700	700
	Height	200	200	200	200	200
WEIGHT (kg)		18	21	23	27	27
ELECTRICAL SUPPLY		Fed by Outdoor Unit	Fed by Outdoor Unit	Fed by Outdoor Unit	Fed by Outdoor Unit	Fed by Outdoor Unit
PHASE		Single	Single	Single	Single	Single
FUSE RATING (BS88) - HRC (A)		6	6	6	6	6
INTERCONNECTING CABLE No. CORES		4	4	4	4	4

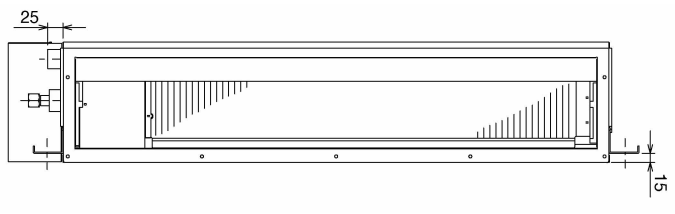
SUZ-KA-VA - OUTDOOR UNITS						
MODEL REFERENCE		SUZ-KA25VA	SUZ-KA35VA	SUZ-KA50VA	SUZ-KA60VA	SUZ-KA71VA
NOISE (dBA) (Lo-Hi)	Heating/Cooling	46 / 46	48 / 47	53-55 / 51-53	53-55 / 51-53	53-55 / 51-53
WEIGHT (kg)		33	37	53	53	58
DIMENSIONS (mm)	Width	800	800	840	840	840
	Depth	285	285	330	330	330
	Height	550	550	850	850	850
ELECTRICAL SUPPLY		220-240v, 50Hz	220-240v, 50Hz	220-240v, 50Hz	220-240v, 50Hz	220-240v, 50Hz
SYSTEM POWER INPUT (kW)	Heating/Cooling (nominal)	0.83 / 0.778	1.108 / 1.09	1.87 / 1.78	2.05 / 1.89	2.37 / 2.53
	Heating/Cooling (UK)	0.76 / 0.62	1.01 / 0.87	1.70 / 1.42	1.87 / 1.51	2.15 / 2.02
STARTING CURRENT (A)		3.65	4.75	6.75	9.75	10.3
SYSTEM RUNNING CURRENT (A) [MAX]	Heating/Cooling	4.04 / 3.44 [8.6]	5.21 / 5.01 [9.7]	6.98 / 7.38 [16.7]	10.38 / 8.98 [16.7]	10.74 / 11.14 [16.9]
FUSE RATING (BS88) - HRC (A)		10	10	20	20	20
MAINS CABLE No. CORES		3	3	3	3	3
MAX PIPE LENGTH (m)		20	20	30	30	30
MAX HEIGHT DIFFERENCE (m)		12	12	30	30	30
CHARGE R410A (kg) - 7m		0.9	1.05	1.6	1.8	2.0

INDOOR UNIT SEZ-KD25-71VA

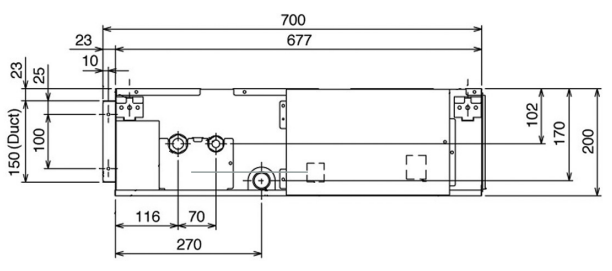
Upper View >



Front View >



Side View >



Models	A	B	C	D	E	F
Size 25	700	752	798	660	7	600
Size 35-50	900	952	998	860	9	800
Size 60-71	1100	1152	1198	1060	11	1000