

PLFY-P-VLMD-E

2-Way Blow Ceiling Cassette Indoor Unit

The PLFY-P-VLMD-E cassette unit fits into the space in a suspended ceiling to provide heating or cooling. This new unit has been redesigned with lower unit height and lower noise levels.

- Light unit for ease of installation
- Terminal block on outside of unit for easy wiring
- Drain lift-pump mechanism as standard
- Newly designed pure white decoration panel with air flow switching and swing functions as standard



Technical Information

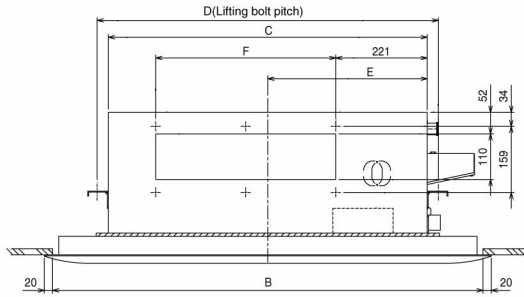
PLFY-P-VLMD-E - INDOOR UNIT

MODEL REFERENCE		PLFY-P20VLMD-E	PLFY-P25VLMD-E	PLFY-P32VLMD-E	PLFY-P40VLMD-E	PLFY-P50VLMD-E	PLFY-P63VLMD-E	PLFY-P80VLMD-E	PLFY-P100VLMD-E	PLFY-P125VLMD-E
CAPACITY (kW)	Heating (nominal)	2.5	3.2	4.0	5.0	6.3	8.0	10.0	12.5	16.0
	Cooling (nominal)	2.2	2.8	3.6	4.5	5.6	7.1	9.0	11.2	14.0
	Heating (UK)	2.3	3.0	3.7	4.6	5.8	7.4	9.2	11.6	14.8
	Cooling (UK)	2.1	2.6	3.4	4.3	5.3	6.7	8.5	10.6	13.2
High Sensible	Cooling (UK)	1.6	2.0	2.6	3.3	4.1	5.2	6.5	8.1	10.2
SHF	(UK)	0.81	0.77	0.74	0.67	0.70	0.72	0.71	0.73	0.73
High Sensible	(UK)	0.94	0.85	0.81	0.73	0.73	0.77	0.77	0.79	0.80
POWER INPUT (kW)	Heating (nominal)	0.065	0.065	0.065	0.074	0.075	0.094	0.140	0.150	0.27
	Cooling (nominal)	0.072	0.072	0.072	0.081	0.082	0.101	0.147	0.157	0.28
AIRFLOW (m ³ /min)	Lo-Mi1-Mi2-Hi	6.5-8.0-9.5	6.5-8.0-9.5	6.5-8.0-9.5	7.0-8.5-10.5	9.0-11.0-12.5	10.0-13.0-15.5	15.5-18.5-22.0	17.5-21.0-25.0	24-27-30-33
NOISE (dBA)	Lo-Mi1-Mi2-Hi	27-30-33	27-30-33	27-30-33	29-33-36	31-34-37	32-37-39	33-36-39	36-39-42	40-42-44-46
WEIGHT (kg)	(Grille)	23(6.5)	23(6.5)	24(6.5)	24(6.5)	27(7.5)	28(7.5)	44(12.5)	47(12.5)	56(13)
DIMENSIONS (mm)	Width (Grille)	776(1080)	776(1080)	776(1080)	776(1080)	946(1250)	946(1250)	1446(1750)	1446(1750)	1708(2010)
	Depth (Grille)	634(710)	634(710)	634(710)	634(710)	634(710)	634(710)	634(710)	634(710)	606(710)
	Height (Grille)*1	290(20)	290(20)	290(20)	290(20)	290(20)	290(20)	290(20)	290(20)	290(20)
ELECTRICAL SUPPLY		220-240v,	220-240v,	220-240v,	220-240v,	220-240v,	220-240v,	220-240v,	220-240v,	220-240v,
		50Hz	50Hz	50Hz	50Hz	50Hz	50Hz	50Hz	50Hz	50Hz
PHASE		Single	Single	Single	Single	Single	Single	Single	Single	Single
RUNNING CURRENT (A)	Heating	0.30	0.30	0.30	0.34	0.35	0.43	0.66	0.69	1.33
	Cooling	0.36	0.36	0.36	0.40	0.41	0.49	0.72	0.75	1.35
FUSE RATING (BS88) - HRC (A)		6	6	6	6	6	6	6	6	6
MAINS CABLE No. Cores		3	3	3	3	3	3	3	3	3
GRILLE MODEL REFERENCE		CMP-40VLW-C	CMP-40VLW-C	CMP-40VLW-C	CMP-40VLW-C	CMP-63VLW-C	CMP-63VLW-C	CMP-100VLW-C	CMP-100VLW-C	CMP-125VLW-C

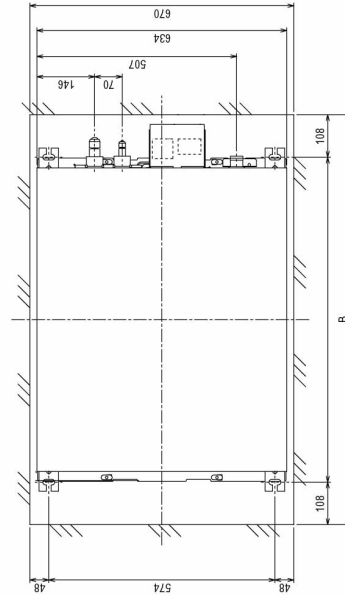
*1 Void space required is 350mm or more

PLFY-P20, 25, 32, 40, 50, 63, 80, 100VLMD-E

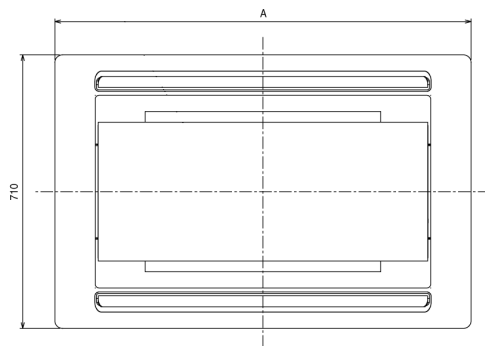
Front View >



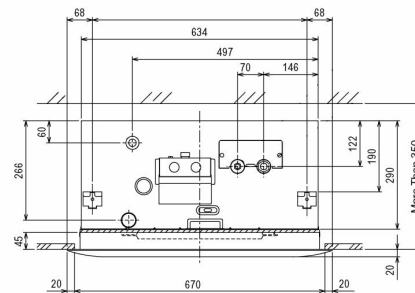
Upper View >



Lower View >



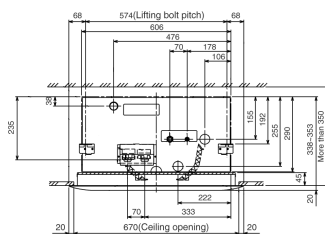
Side View >



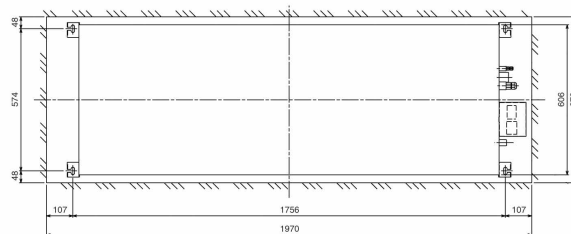
Model	A	B	C	D	E	F
PLFY-P20VLMD-E						
PLFY-P25VLMD-E						
PLFY-P32VLMD-E	CMP-40VLW-B	1080	1040	776	824	388
PLFY-P40VLMD-E						217.5x2=435
PLFY-P50VLMD-E	CMP-63VLW-B	1250	1210	946	994	473
PLFY-P63VLMD-E						
PLFY-P80VLMD-E						
PLFY-P100VLMD-E	CMP-100VLW-B	1750	1710	1446	1494	723
						188.5x4=754

PLFY-PI25VLMD-E

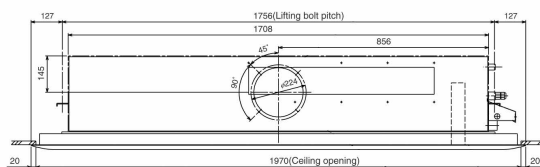
Side View >



Upper View >



Rear View >



Lower View >

